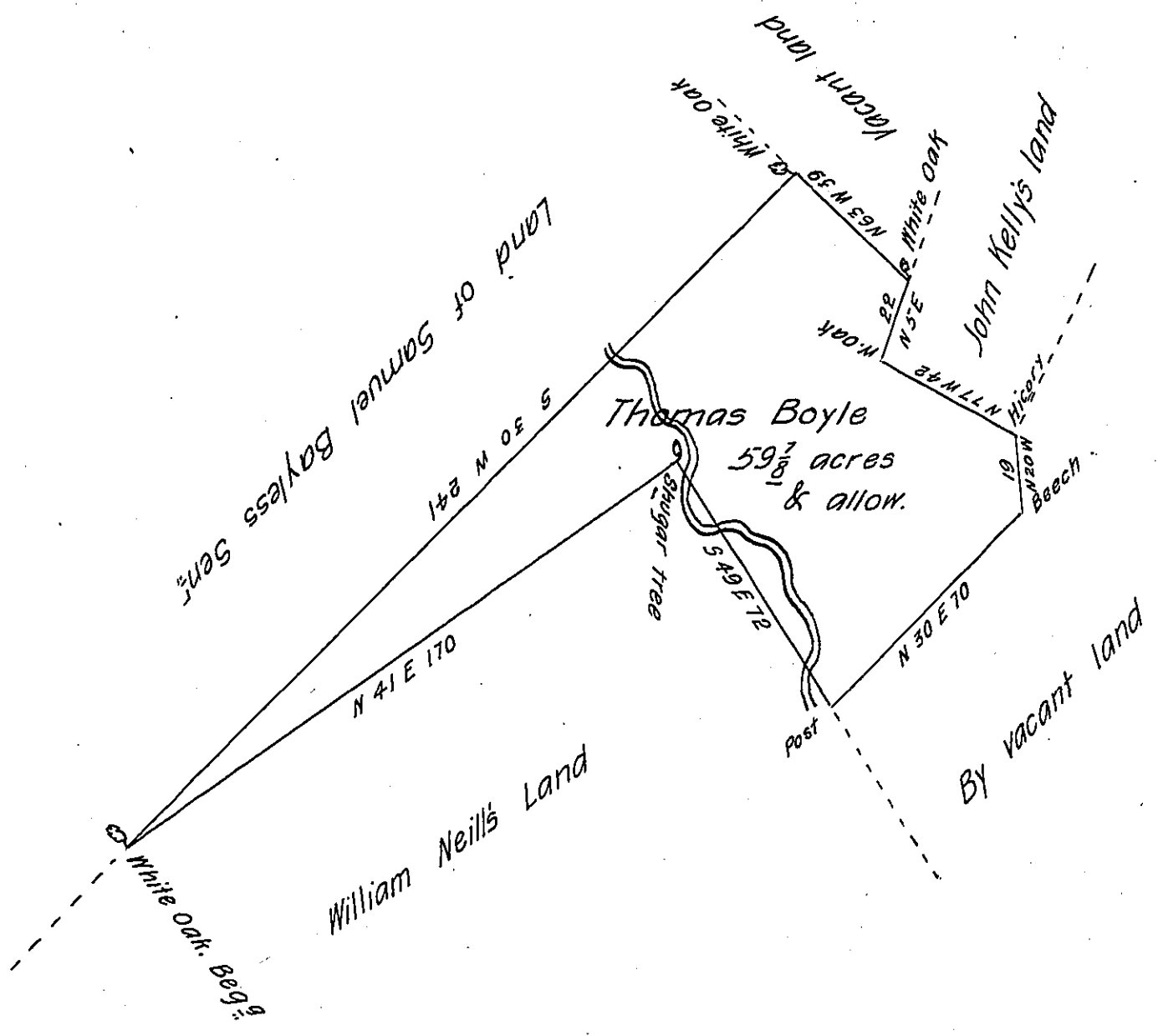


15



The Draught of a tract of land Called _____ Situate on
 the North side of Buffaloe Creek in the County of Berks. Containing fifty nine
 acres 148 perches with an allowance proportionate to 6 P Cent for Roads.
 Survey'd the 31st day of August Anno Dom 1769. In Pursuance of an Order of survey
 to Thomas Boyle bearing date at Philad^a the 3d day of April Anno Dom 1769 and
 numbered 2277.

P- W^m Maclay D.S.

To John Lukens Esq S.G.
 of Pennsylvania.

IN TESTIMONY that the above is a copy of the original remaining on file in
 the Department of Internal Affairs of Pennsylvania, made
 conformably to an Act of Assembly approved the 16th day of
 February, 1833, I have hereunto set my Hand and caused
 the Seal of said Department to be affixed at Harrisburg,
 this twentieth day of July 1905.

Loac B. Brown
 Secretary of Internal Affairs.